

The Business Environment in Nevada



Heather Brown, Senior Vice President Entrepreneurial Development





LVGEA DEMYSTIFIED

A VIRTUAL WORKSHOP

Stop leaving money on the table.

**WHO IS THE
LVGEA?**

To strengthen the Greater Vegas economy through intentional business attraction, expansion, and connectivity.

**UPDATED
TARGET
INDUSTRY
VERTICALS**



Clean Technologies
Battery Manufacturing



Healthcare Services
Life Sciences, R&D,
and Pharma



Information &
Communication
Technologies
Fintech



Business &
Financial Services
Corporate Headquarters



Creative Industries
Sports & Entertainment
Digital Media & Production



**TAKE
ADVANTAGE OF
LVGEA'S FREE
SERVICES**

- Custom Economic Data & Cost Comparisons
- Access to Workforce Development Programs
- Public & Private Sector Connectivity
- Foreign Trade Zone No. 89
- Assistance with State & Local Tax Abatements

**CUSTOM
ECONOMIC
DATA & COST
COMPARISONS**

**Ask our team to create a
CUSTOM REPORT for you!**

- **Regional Industry Data & Trends**
- **Labor Force & Occupational Data**
- **Skills Transferability Intelligence**

**ACCESS TO
WORKFORCE
DEVELOPMENT
TRAINING
PROGRAMS**



- On-The-Job-Training (OJT) - Up to \$10k per employee
- Silver State Works - Up to \$2k per employee
- Upskill Grant (IWT) - Up to \$10k per business
- Recovery Grant* (ARPA) - Up to \$10k per business

*Must have City of Las Vegas Business License

**PUBLIC &
PRIVATE
SECTOR
CONNECTIVITY**



**6 DEGREES OF
KEVIN BACON**

**2 DEGREES OF
LVGEA**



**ASSISTANCE
WITH STATE &
LOCAL TAX
ABATEMENTS**



SALES & USE TAX ABATEMENT

Reduced to as low as 2% for up to 2 years



MODIFIED BUSINESS TAX ABATEMENT

Up to 50% for up to 4 years



PERSONAL PROPERTY TAX ABATEMENT

Up to 50% abatement for up to 10 years



DATA CENTER TAX ABATEMENT

Partial Sales & Use and Personal Property Tax abatements



AVIATION PARTS TAX ABATEMENT

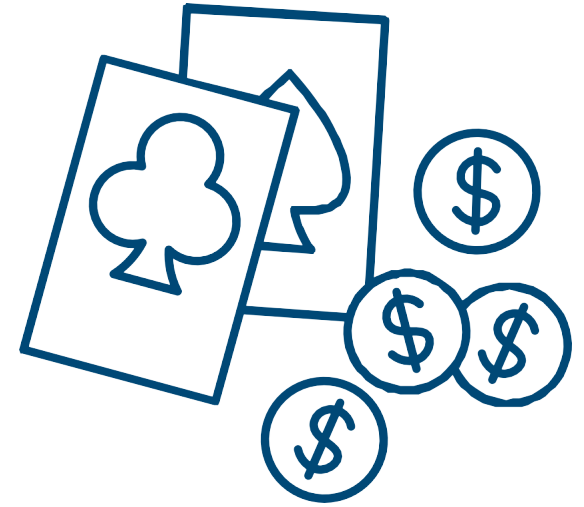
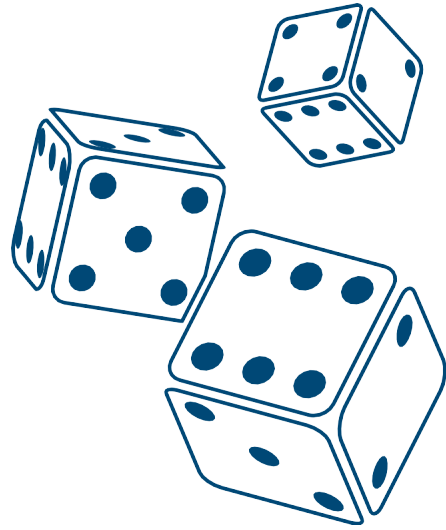
Partial Sales & Use and Personal Property Tax abatements



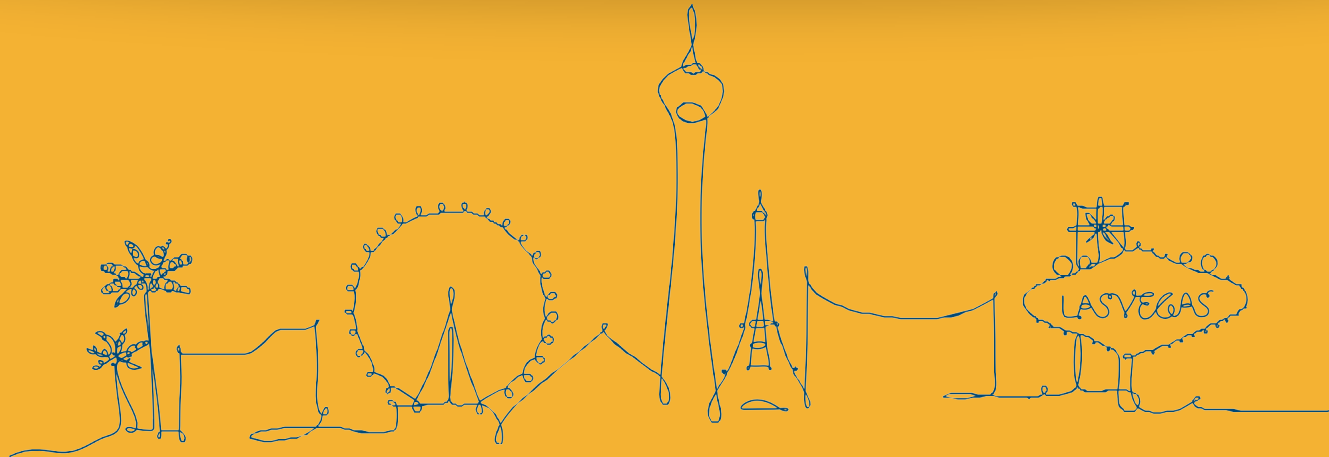


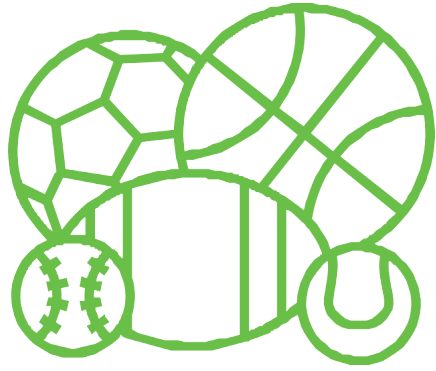
LAS VEGAS
GLOBAL ECONOMIC ALLIANCE

Southern Nevada's Economic Landscape and Future Trends

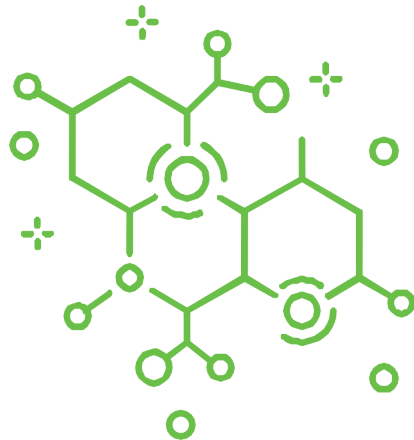


Traditional Economic Landscape

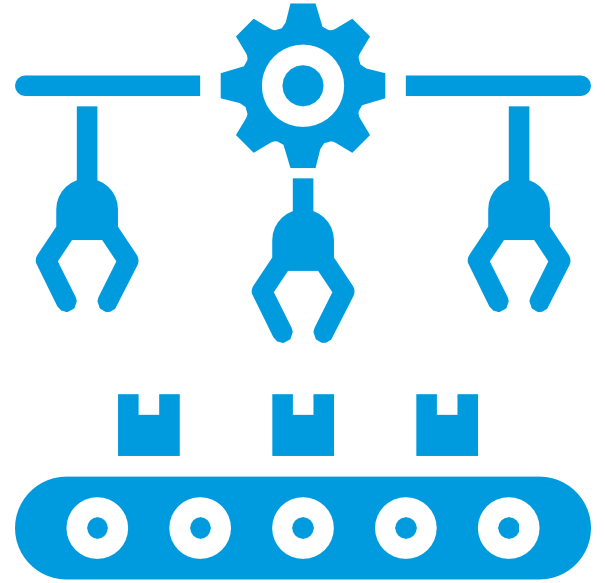




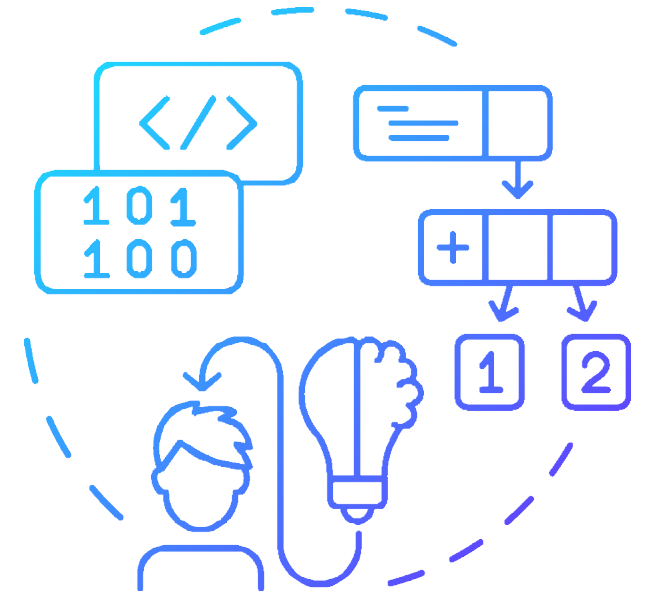
Economic Diversification Efforts

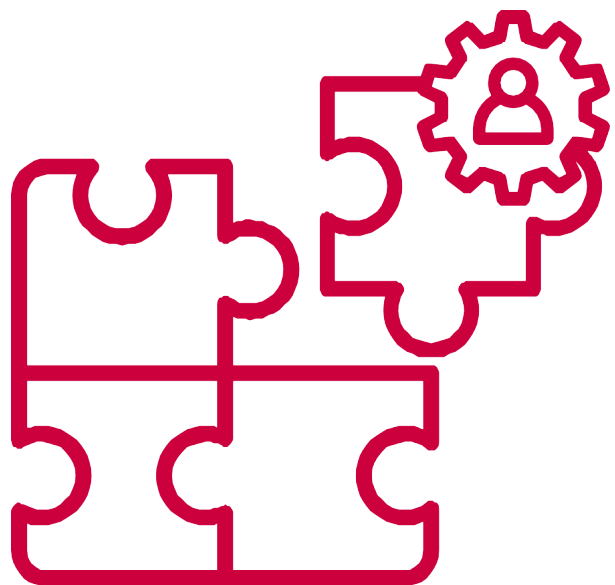


Workforce Gaps in Southern Nevada



Emerging Trends and Opportunities





Workforce Pipeline Initiative

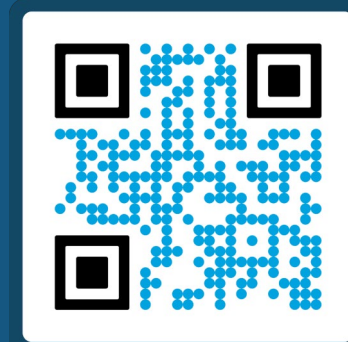




PERRY URSEM

Senior Vice President of
Business Development
702-522-3341
perryu@lvgea.org

Stay Connected
LVGEA.ORG



SCAN ME

